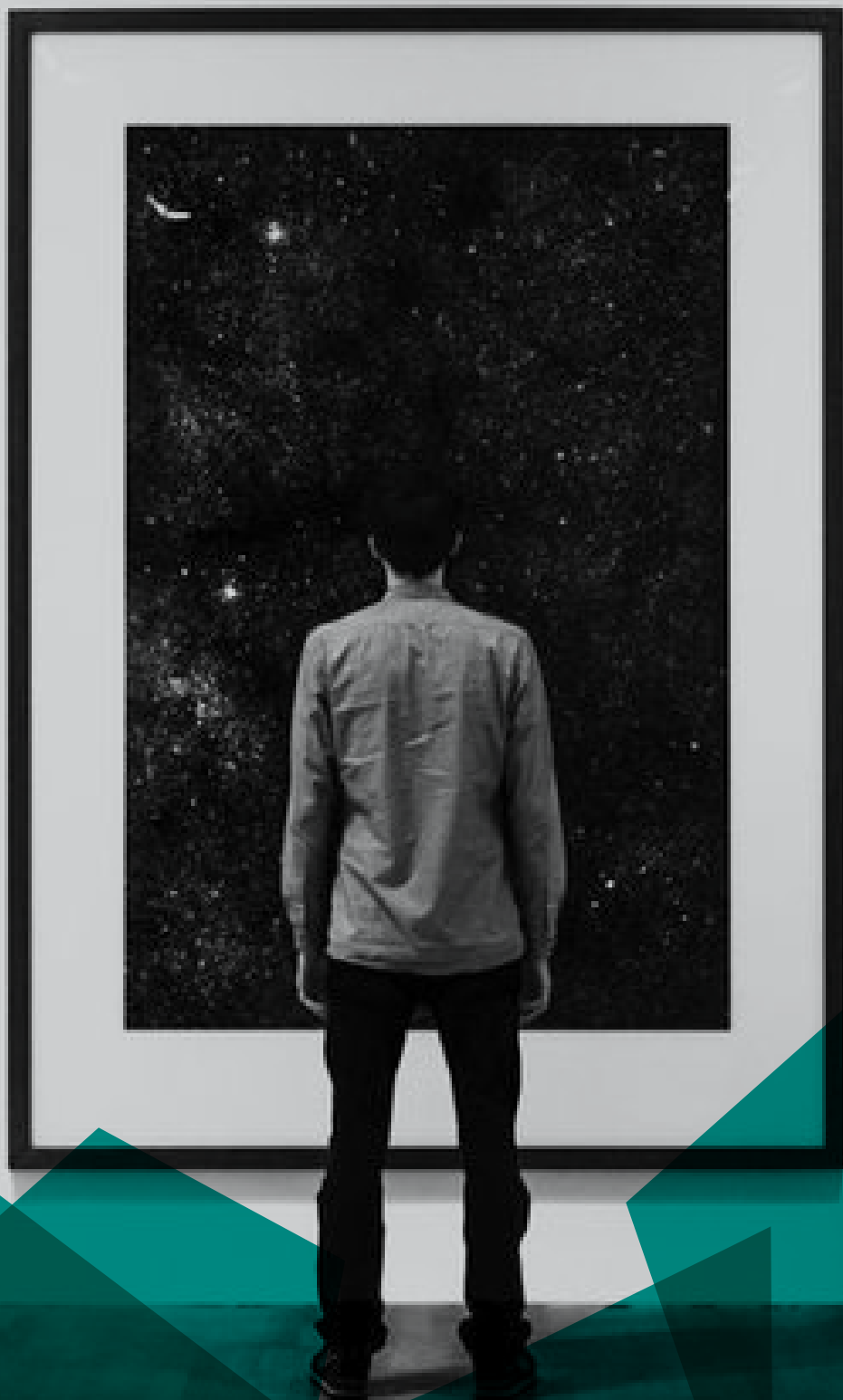


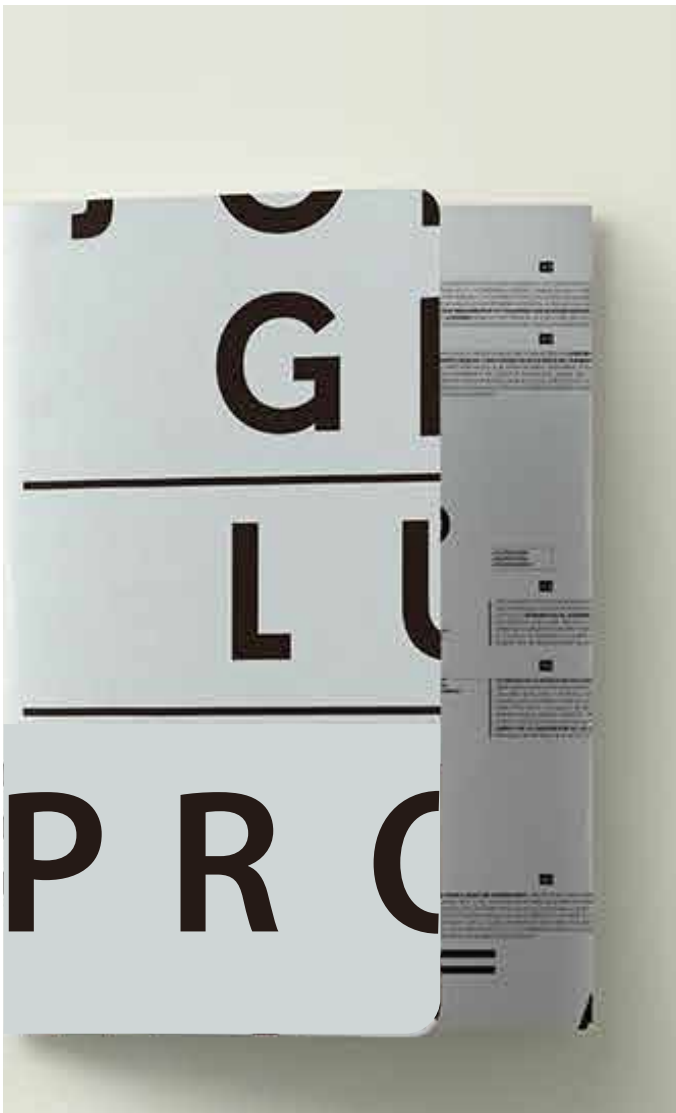


PrintPro

Powered by
Odoo



Print Pro



PrintPro is a comprehensive and powerful ERP solution, exclusively designed for printing companies. PrintPro is powered by Odoo - the most popular vendor of open source enterprise solutions and has a wide range of modules, which can help streamline the entire business process with ease. With its simple and user friendly interface, PrintPro can be the apt solution for any printing company.

The detailed features of PrintPro are listed as follows:

Sales

Purchase

Inventory

Accounting

General Features

01

Sales

1.1

Customers

Customer Master Data Management

Multiple Contacts & Address for a Customer

Individual & Company Customers

Sales Price Lists

Customer Payment Terms

Integration to Ledger Accounts

1.2

Sales Leads, Opportunities Management

Sales Lead Capture - User entry/Email

Conversion of Sales lead to Opportunity

Opportunities Followups

Sales team Activity Tracking

Meetings & Calendar Management





1.3 Quotations & Sale Orders

Quotations Preparations - Using Printing Dimensions

Conversion of Quotations to Orders

Creating a Manufacturing Orders

Send Quote/Order by Email directly from the System

Multiple Address - Delivery, Invoice

Sales Discount Global and Item wise

Sales Approval levels configurations

Integration to Accounts

Integration to Inventory

Sales Activity Logs

Sales History

Sales Analysis Reports

1.4 Jobs

Product Masters

Bill Of Materials -
Configure Finished Products

Purchase

2.1

Purchase Management

Request For Quotations(RFQ)

Send RFQ/Order by Email directly from the System

Bid Selection process

Landed Cost Calculations

Purchase Orders and Shipments

Purchase Approval Levels

Integration to Accounts

Integration to Inventory

Purchase Activity Logs

Purchase History

Purchase Analysis Reports



03

3.2 Products Masters

Product Type-Stockable/Service/
Consumable

Barcode and Label Printing

Hierarchical Product Categories

Inventory Valuations

Accounts Entries mapping on
Products

Periodical Inventory Adjustment

Scrap Management

Reorder Rules Configurations

Inventory

3.1

Warehouse Management

Warehouse Dashboards

Multiple Warehouse and Locations

Receipt - Incoming Shipment

Delivery Order - Sales

Internal Transfer - Location to
Locations

Back Order Management

Invoice Based on Delivery Order
and Incoming Shipment



04

4.2 Sales & Purchase

Customer Invoices & Receipts

Vendor Bills & Payments

4.4 Post Dated Cheques

Received PDCs Management

Issued PDCs Management

3.3

Inventory Reports

Stock Movement

Inventory Valuation - Product/
Location/ Category wise

Stock Aging

Stock Expiration

Accounting

4.1

Accounting Dashboard

4.3

Journal Entries/Vouchers

Journal Entries-Payment/Receipt/
Petty Cash/Contra Vouchers

Automatic and Manual
Reconciliation of Account Entries

4.5

Reports

Sales Invoices and Analysis

Vendor Bills and Analysis

Customer/Vendor Ledger

General Ledger

Trial Balance

Balance Sheet

Profit and Loss

Aged Customer/Vendor Balance

Collection Reports

Voucher Reports



05

General Features

5.1 Display Features

User Configurable Dashboards

Company Calendar View

Various views for all modules- List, Block, Pivot, Graph, Calendar

Search & Advance Search Options for all modules

Advanced Filter Options

Group By Options

Add to Favourite options for Filters

5.2 Discuss

Internal Chats

Chat Groups

Internal Notes

Audit Trail

5.3 General Settings

User Management

Access Control based on User Groups

Multi Company Configurations

Language Configurations

Email Settings - Incoming/Outgoing

Data Import/Export Options

Document Attachment Options