

# READY MIX PRO



# odoo Based Ready-Mix ERP

Fully customized to suit the needs of Ready Mix companies with capability to manage multiple plant locations.

## Cloud/Stand alone Ready-Mix ERP for Ready Mix Industries

Ready Mix Pro is a cloud/Stand alone ERP solution with capability to manage multiple plant locations – Purchase, Sales and Marketing, Customer Relationship Management [CRM], Accounts, Warehouses and Production Management, Quality Test, Dispatch Management, Data Automation, Fleet Management, GPS Activated Tracking, HRM, Business Intelligence and Reports.



### Improve Operational Efficiency

Store all your sales, operations, financials, Customer Relationship Management, inventory data at one point and retrieve with ease.



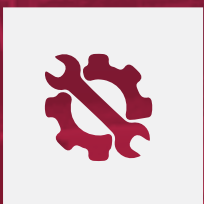
### Intelligent and quicker decision making

With all your business data at your fingertips and intelligent reporting to decipher the same, you can respond better to the changing business landscape.



### Rapid Deployment

Our easy to use interface means quicker time to speed, for your staff and less overhead during the deployment phase.



### Zero Maintenance

With the option for cloud/Stand alone deployment, forget all the maintenance overhead and concentrate on your business profitability.



## Modules

Ready-Mix Pro is a comprehensive business management solution that offers much more than your basic software's. Our USP is in the easy to use interface and the advanced reporting tools that will motivate easy adoption without much change to your existing workflow.



Sales



Purchase



Inventory



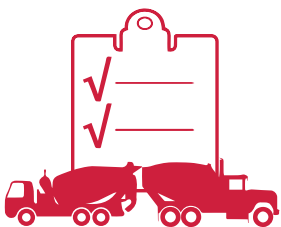
Production



Quality Test



Fleet Management



Dispatch Management



HR & Payroll



Accounting



GPS Tracking



Dashboard



Reports



## SALES

---

Ready-Mix Pro ERP system is tightly integrated with the sales and distribution module. This integration enables the mapping and supply of single-site or multi-site organizations.

- Leads and Opportunities Management
- Sales Pipeline
- Creation of quotations and sale orders
- Customer list
- Scheduling the delivery
- Checking credit limits
- Shipment details
- Pending payment details
- Sales person details
- Sales Analysis Reports
- Invoicing/billing

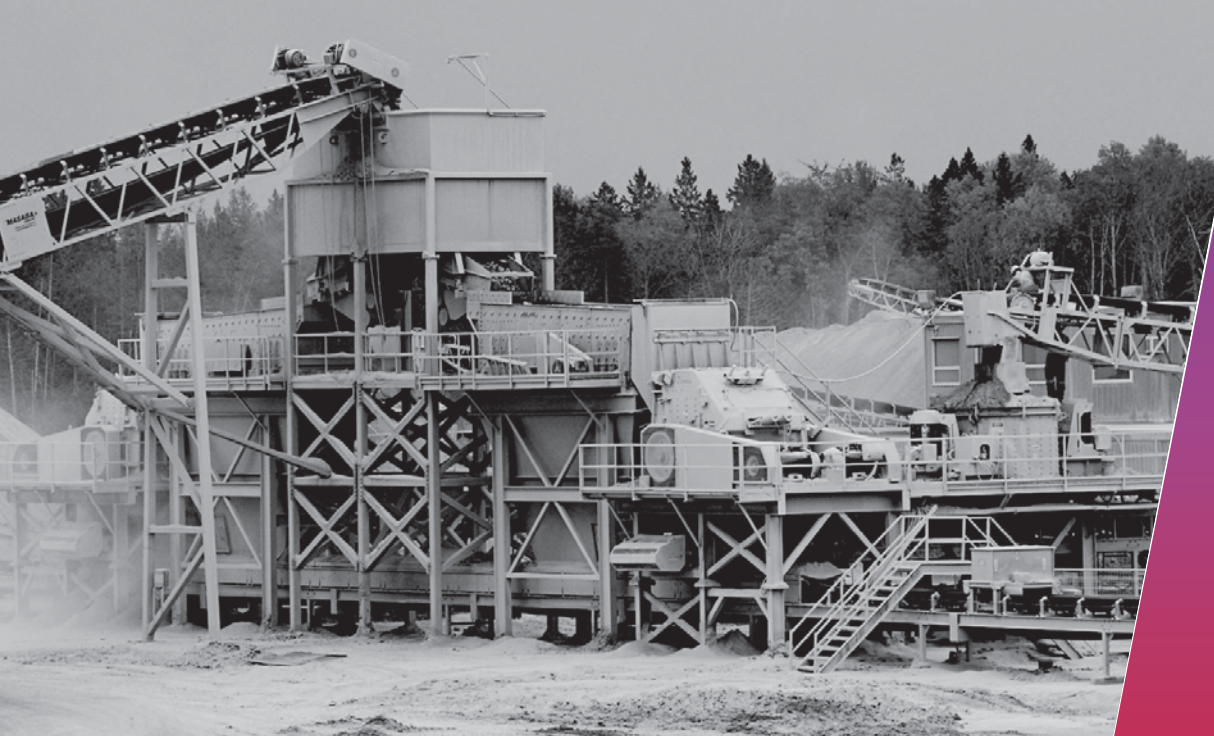


## PURCHASE

---

Purchase module in Ready-Mix Pro streamlines procurement of raw materials, packaging material, sub assembly and other Non Inventory Materials. Purchase module is tightly integrated with the inventory control and production planning modules.

- Inward
- Vendor list and details
- Purchase order creation
- Invoicing/billing
- Raw materials
- Purchase reports



## INVENTORY

---

This module provides a powerful and flexible set of features to help you manage and report your inventory information. Our inventory management facilitates processes of maintaining the appropriate level of stock in a warehouse.

- Opening stock
- Stock level
- Stock correction
- Product commodity
- Warehouse management
- Product masters
- Inventory analysis reports
- Inventory valuation
- Internal Transfer
- Batch/Serial Number configurations

## PRODUCTION

---

We have developed production module for the specific needs of Ready-Mix industries include core capabilities. It facilitates production planning, Quality testing and delivering products to customers.

- Production schedule
- Work order
- Raw material planning based on pending sale order/stock in hand
- Automatic PR generation for procuring raw material
- Quality and plant maintenance
- Production reporting
- Resource scheduling
- Wastage and rework quantity reporting



## QUALITY TEST

---

Quality control in Ready-Mix Pro facilities are versatile and offer support for every phase of your operations, from receipt and acceptance of raw materials, through production of intermediates, to inspections of finished goods before shipment to the customers.



- Task
- Design mix
- Design mix approval
- Cement
- Concrete
- Crushing
- Moisture
- Water absorption
- Density
- Specific gravity
- Temperature
- Fineness
- Dry Loose
- Impact
- Trial Mix
- Sieve

## FLEET MANAGEMENT

---

Fleet management system maintains data on the fleet of trucks to measure fleet efficiency and determine leakages in profit. Accurate data on the inventory stored in the warehouses is needed to maintain optimum loading of trucks, dispatch times, weigh bridge automation etc...

- Spare parts and tyres management.
- Service and maintenance schedule management.
- Insurance management.
- Weighbridge automation for accurate inward inventory tracking.
- Batching plant automation for accurate inventory consumption tracking.
- Automated data capture.





## DISPATCH MANAGEMENT

---

In Ready-Mix ERP dispatch management source facilities are versatile and offer support for every phase of your operations, from receipt and acceptance of raw materials, through production of intermediates, to inspections of finished goods before shipment to customers.

- Transit mixer
- Pump dispatch management
- Time management
- GPS based estimated arrival time

## HR & PAYROLL

---

Human Resource Management Module has the set of rich features and integrates seamlessly with other module. HR Module offers a wide variety of solutions to maintain the workforce of the company which could be integrated with other departments.

- Employee details
- Employee management
- Leaves management
- Employee loan details
- Payslip/ Batch Payslip management
- Shift Management
- Timesheets management
- Attendance



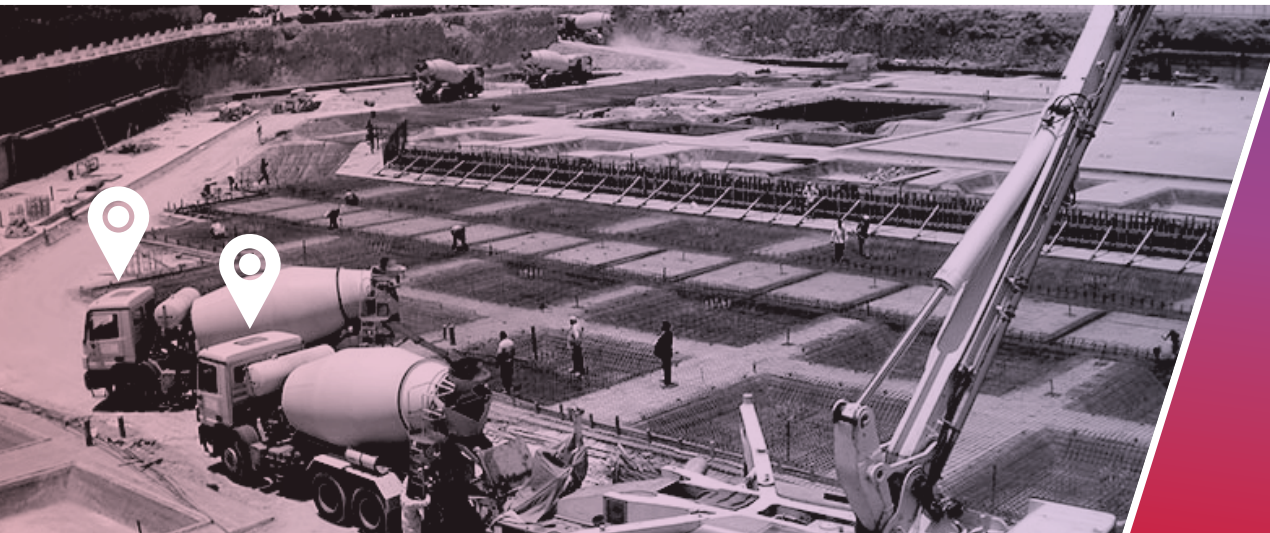


## ACCOUNTING

---

In Odoo Finance Management Module has the capability of meeting all the accounting and finance needs of organization. Accounts module gathers financial data from various functional and generates valuable financial reports such as

- Journal Entries
- Chart of accounts
- Customer Invoice and receipts
- PDC Management
- General Ledger
- Balance Sheet
- Branch wise profit and loss
- Aging Customer/Vendor Balance
- Collection reports



## GPS TRACKING

---

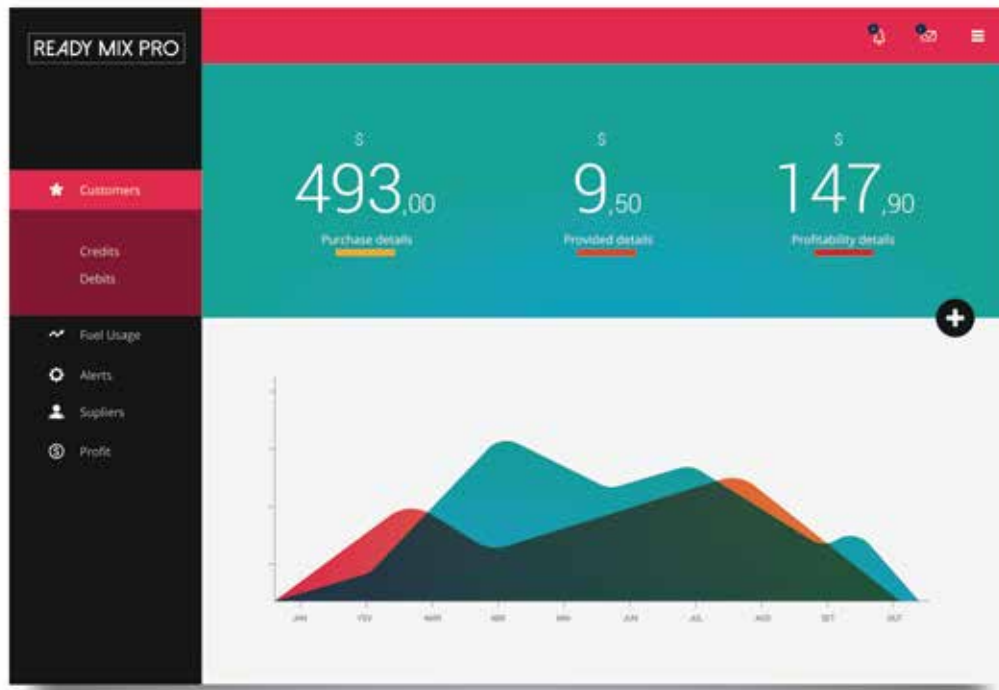
GPS vehicle tracking gives a real-time tracking and information system on your entire fleet. GPS modules fitted in your fleet communicate with the ERP solution to enable a whole new dimension in managing your fleet.

- Real time vehicle location
- Driver details
- Trip details
- Fuel usage & fuel consumption
- Estimate the arrival time
- Emergency alerts
- Monthly, weekly, daily reports



# DASHBOARD

To survive in a competitive environment, users have to take quick decisions. Thus it is necessary to have accurate information for decision making. Ready-Mix Pro - User's Dashboard responds this need and transforms existing data into quality information.



- Dashboard allows viewing chart reports for Sales Invoice, Purchase details, age of the stock components, stock rotation time, evolution of stock, profitability products, changes of rotation debits and credits on customers and suppliers.
- Ready-Mix Dashboard allows Fuel usage Real - time location of your vehicle, speed of your vehicle. Estimated arrival times, Fuel usage & level. Fleet reports, Alerts, Driver & Vehicle information.

## REPORTS

Odoo provides clear on the business process workflow all throughout the business operation in every plant. The reports used to print system documents. The reports used to print system documents. The result is usually a PDF generated by a selection made on the screen.

- Sales reports
- Purchase reports
- Stock reports
- Finance reports
- Human resource reports
- Fleet reports



## ABOUT ZESTY LABS

---

Zesty Labs (formerly ZestyBeanz) is a part of ALRAIS LABS, with its expertise in Odoo (formerly OpenERP), and has direct offices in Germany, India and UAE.

The company was formed in 2009, and is the largest global listed partner for Odoo, having partnerships in 5 countries – Germany, UAE, Bahrain, Saudi Arabia and India.

Zesty Labs has around 60 technical and functional consultants working in different locations around the world. With its highly experienced and collaborative team, Zesty Labs provides customization, consulting, training, support and maintenance to partners and customers in over 50 countries.

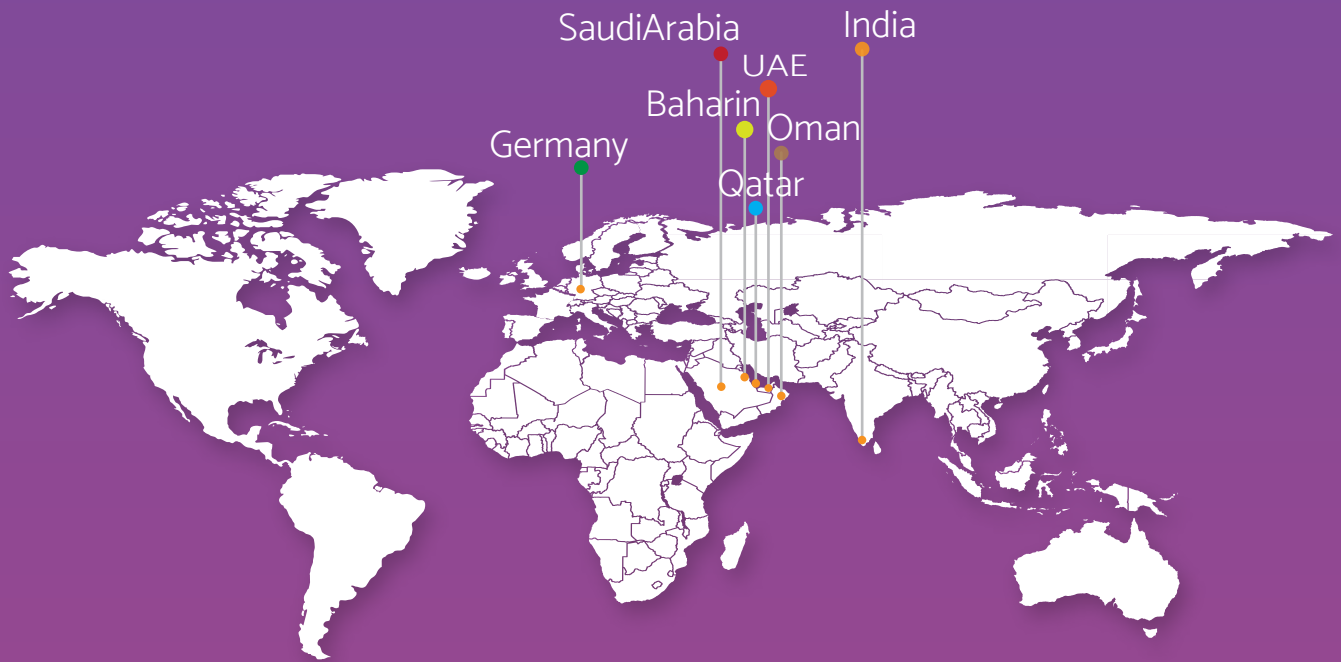
It has live experiences in delivering customized ERP solutions based on this fastest developing Open Source ERP application including in the non traditional, non English European and Latin American markets.

We have more interactions with the global market than anyone else, building an enviable understanding of business in every cultural, economic and political region of the world.



## OUR CLIENTS





## UAE

Alraislabs  
Corporate Head Office  
20<sup>th</sup> Floor, Millennium Plaza Building  
Sheikh Zayed Rd. Dubai, UAE  
Ph : +971 4333 2222  
Fax : +971 4333 2332

## GERMANY

ZestyBeanz Technologies GmbH  
Reuterstraße 1  
90408 Nürnberg  
Ph : +49 911 4801 444  
Fax : +49 911 4801 445

## SAUDI ARABIA

Mohammed Mahmood Zahid Street,  
Suleimania District P.O.Box 9547  
21423 Jeddah  
Ph : +966-12-640 5846

## BAHRAIN

Exhibition road Block 318  
Road 1805 Building 3  
Ph : +973 77366444

## INDIA

**Trivandrum**  
Nila, Technopark  
Trivandrum, Kerala India -695581  
Ph : +91 471 4063254

**Cochin**  
2987, Manikkath Cross Road  
Ravipuram, Kochi-682016  
Ph : +91 484 4063254

**Calicut**  
Alrais Towers  
St. Vincent Colony Rd.  
Asokapuram, Calicut 673006  
Ph : +91 495 6999912